



# School Newsletter

## Friday 4th April 2025

*'You must love one another as I have loved you.'* John 13 v 34.

Working together with love we will provide a happy and nurturing environment where all will, **'learn to love and love to learn'**, making outstanding progress through an enriched and creative curriculum. Through our strong Christian ethos we will celebrate and embrace the richness of our community.

**Learn to Love - Love to Learn**

*'You must love one another as I have loved you.'* John 13 v 34



## Baisakhi (Vaisakhi) 2025– All Day Baisakhi (Vaisakhi) Disco Friday 4th April

It was wonderful to welcome Sohan Kailey back to St Giles' CE Primary today. Everyone thoroughly enjoyed the Baisakhi Disco!

**WE ARE A UNICEF GOLD  
RIGHTS RESPECTING SCHOOL**



**Children's rights are learned, understood  
and lived in this school.**





# **Year 6 Leavers' Disco Raffle**

**Tickets On Sale At The  
School Gate Next  
Week. £1 a Strip**

**Draw: Thursday 10th  
April**



**Friday 11th April**

**End of Term Footballing Fun!**

**We'll be ending term with lots of Footballing Fun with Walsall FC Foundation, who are bringing their MEGA-GOAL...**

**Friday 11th April is a Sports Themed Non-Uniform Day in exchange for a £1 donation, which will go towards sports and play equipment for the children.**



**VE DAY**®

80<sup>TH</sup> ANNIVERSARY

A SHARED MOMENT OF CELEBRATION

8 M A Y 2 0 2 5

## **Friday 9th May 2025**

We'll be celebrating VE Day 80 on Friday the 9th May, with a variety of events, to mark this historic occasion.

8.30am– Pupil flag collection at the school gate.

9.00am– VE Day 80 Service in Church (Parents Welcome)

9.30am– Bell ringing 'Ring Out In Celebration'.

10.00am-12.30pm– Ice Cream Street Party– 1940's Music



## School Attendance

For most pupils, the best place to be is in school, surrounded by the support of their friends and teachers.

This is important not just for your child's learning, but also for their overall wellbeing, wider development and their mental health. The Chief Medical Officer has [written a letter](#) to schools explaining why [regular attendance](#) is vital to the life chances of children and young people.

As a parent, it can be difficult to know when to send your child into [school](#) if they are feeling unwell or mildly anxious, but finding solutions is a team effort between schools, parents and children, and there is support and information available to help you make the best decision for your child.

There is lots of support available in school to support and overcome barriers to attendance. If you are requiring support, or would like to know what support is available, please contact Mr Dow or Mrs Leonowicz who will be more than happy to help.

[ldow@st-giles.walsall.sch.uk](mailto:ldow@st-giles.walsall.sch.uk) / [lleonowicz@st-giles.walsall.sch.uk](mailto:lleonowicz@st-giles.walsall.sch.uk)

Darlaston Salvation Army presents



# *Celebrate the 80th Anniversary of VE Day*

*with Birmingham  
Citadel Band*

**Saturday 10th May  
2025 at 7pm**

## **Tickets:**

£5 from Darlaston Salvation Army  
or by emailing  
[darlaston@salvationarmy.org.uk](mailto:darlaston@salvationarmy.org.uk)



 **Darlaston  
Town Hall**  
Victoria Rd  
WS10 8AA



## Poetry Performances

Parents are welcome to join us for our Spring/Summer Performance Poetry programme. Each week a class will perform three poems in Church.

Doors Open 8.30am with performances commencing at 9.00am.

Friday 28<sup>th</sup> February-6S

Friday 7<sup>th</sup> March-6G

Friday 21<sup>st</sup> March-5S

Friday 28<sup>th</sup> March- \*4G POSTPONED

Friday 4<sup>th</sup> April-4S/4G

Friday 2<sup>nd</sup> May-3G

Friday 9<sup>th</sup> May-3S

Friday 16<sup>th</sup> May-5G

Friday 13<sup>th</sup> June,2S,2G

Friday 20<sup>th</sup> June-1G

Friday 27<sup>th</sup> June-1S

Friday 4<sup>th</sup> July-EYFS

## HCP 0-19 Service

# Are you a parent/carer of a child/young person with Special Educational Needs and/or Disabilities?

Our SEND Team are offering weekly drop-in sessions covering the following:



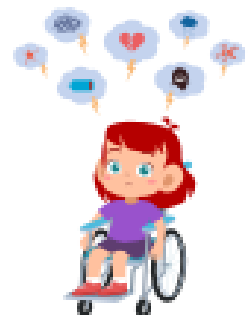
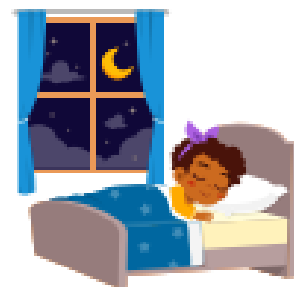
Toileting

### Behaviour



Fussy Eating

### Sleep



Emotions

🕒 9:30am-11:30am

📅 Every Thursday

📍 Child Development Centre, Coalheath Lane, Walsall, WS4 1NG

If you require advice and support from the Health Visiting Service, School Nurse Service or any of our teams, please contact our **Single Point of Access** on **01922 603074** or **send a text explaining your concerns** with your **child's name, date of birth** and **NHS number** to **07520 634909**.





# Should I keep my child off school?



## Yes

### Until...

<b>Chickenpox</b>	at least 5 days from the onset of the rash and until all blisters have crusted over
<b>Diarrhoea and Vomiting</b>	48 hours after their last episode
<b>Cold and Flu-like illness (including COVID-19)</b>	they no longer have a high temperature and feel well enough to attend. Follow the national guidance if they've tested positive for COVID-19.
<b>Impetigo</b>	their sores have crusted and healed, or 48 hours after they started antibiotics
<b>Measles</b>	4 days after the rash first appeared
<b>Mumps</b>	5 days after the swelling started
<b>Scabies</b>	they've had their first treatment
<b>Scarlet Fever</b>	24 hours after they started taking antibiotics
<b>Whooping Cough</b>	48 hours after they started taking antibiotics

## No

but make sure you let their school or nursery know about...

<b>Hand, foot and mouth</b>	<b>Glandular fever</b>
<b>Head lice</b>	<b>Tonsillitis</b>
<b>Threadworms</b>	<b>Slapped cheek</b>



SCAN ME

### Advice and guidance

To find out more, search for health protection in schools or scan the QR code or visit <https://qrco.de/minfec>.

## Term Dates

### **2024/25 academic year**

Autumn term 2024

Term ends: Friday 20 December 2024

Spring term 2025

Term starts: Monday 6 January 2025

Half term holiday: Monday 17 February 2025 to Friday 21 February 2025

Term ends: Friday 11 April 2025

Summer term 2025

Term starts: Monday 28 April 2025

Half term holiday: Monday 26 May 2025 to Friday 30 May 2025

Term ends: Monday 21 July 2025

### **INSET Days / Non– Pupil Days**

Half term holiday: Monday 26 May 2025 to Friday 30 May 2025

Term ends: Monday 21 July 2025

~~INSET 1– Monday 2 September 2024~~

~~INSET 2– Wednesday 25th September 2024~~

~~INSET 3– Wednesday 29th January 2025~~

**INSET 4– Wednesday 25th June 2025**

INSET 5– Monday 21 July 2025



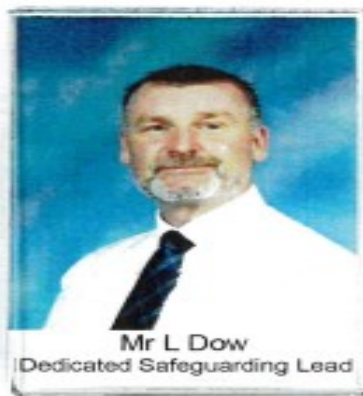
# St Giles' CE Primary School **Safeguarding Team**



Mr Mark Dakin  
Headteacher



Mrs Harsimrat Kaur Mavi  
Deputy Headteacher



Mr L Dow  
Dedicated Safeguarding Lead



Mrs Lindsey Leonowicz  
Safeguarding Manager



Mrs Chemaine Green  
Mental Health +  
Behaviour Support Worker



Cllr. Simran Cheema  
Safeguarding Governor

## Safeguarding at St Giles' CE Primary School

2024/25

If you have any Safeguarding Concerns please contact

Mr Dow on:

07932 708724

[ldow@st-giles.walsall.sch.uk](mailto:ldow@st-giles.walsall.sch.uk)

NSPCC ™

**HELPLINE**

**0808 800 5000**

**help@nspcc.org.uk**

**If you have any concerns about a child, trust your instincts and contact the NSPCC Helpline. Our specialist team will listen, advise and take any action needed.**

An estimated 1 in 20 children have experienced sexual abuse. And child sexual abuse is under-reported by adults. It's time for that to change.

It's never too soon to talk to us. And what you share could make a life-changing difference to a child.

You can contact the NSPCC Helpline by calling 0808 800 5000, emailing help@NSPCC.org.uk or completing our report abuse online form.

Due to an increase in demand across our service, our voice Helpline is currently available 11am–5pm Monday to Friday. You can still email help@NSPCC.org.uk or complete our report abuse online form at any time for free. You don't have to say who you are.

**If you think a child is in immediate danger, please call the police on 999 straight away.**