



## School Newsletter

### Friday 14th March 2025

*'You must love one another as I have loved you.'* John 13 v 34.

Working together with love we will provide a happy and nurturing environment where all will, **'learn to love and love to learn'**, making outstanding progress through an enriched and creative curriculum. Through our strong Christian ethos we will celebrate and embrace the richness of our community.

**Learn to Love - Love to Learn**  
*'You must love one another as I have loved you.'* John 13 v 34



## Mughal Miniatures

### The Elephant & The Drummer:

We'll be joining Elnaz the Elephant and Dholli the Drummer on their individual journeys of self-discovery, as they explore themes of perception and body positivity.

3S and 3G will be taking part in workshops during the morning. Live outdoor afternoon performances (weather permitting) for the whole school on Friday 21st March.



**Baisakhi (Vaisakhi) 2025– All Day Baisakhi**  
**(Vaisakhi) Disco**  
**Friday 4th April**

**We are all looking forward to welcoming  
Sohan Kailey back to St Giles' CE Primary on  
Friday 4th April Traditional Dress– Party  
Clothes (\*Sport Trainers Required)**





## Poetry Performances

Parents are welcome to join us for our Spring/Summer Performance Poetry programme. Each week a class will perform three poems in Church.

Doors Open 8.30am with performances commencing at 9.00am.

**Friday 28<sup>th</sup> February-6S**

Friday 7<sup>th</sup> March-6G

**Friday 21<sup>st</sup> March-5S**

Friday 28<sup>th</sup> March-4G

**Friday 4<sup>th</sup> April-4S**

Friday 2<sup>nd</sup> May-3G

**Friday 9<sup>th</sup> May-3S**

Friday 16<sup>th</sup> May-5G

**Friday 13<sup>th</sup> June,2S,2G**

Friday 20<sup>th</sup> June-1G

**Friday 27<sup>th</sup> June-1S**

Friday 4<sup>th</sup> July-EYFS



**FACE WALSALL**  
**PARENT CARER FORUM**  
Families & Carers Empowered

## Information Sharing Event

FACE Walsall have organised an Information Sharing morning over coffee and tea for parents/carers of children and young people aged 0–25 years with additional needs and disabilities and would like to invite you along.

Date: **Friday 28<sup>th</sup> March 2025**

Time: **10.00-12.00**

Venue: Bloxwich Active Centre, High St, Bloxwich, Walsall WS3 2DA

The event is designed for the parents/carers to come along to be able to chat to those who offer services to our children in Walsall

### Confirmed so far as attending are:

Citizen Advice Sandwell & Walsall, Walsall Family Hubs, Adult Services, Short Breaks, SENDIAS, Nova Training, Healthwatch Walsall, Skills Tank, Local Offer, Wolverhampton College, Juniper Training

Book via Eventbrite - <https://bit.ly/3EUfPW1>

### Help us shape the services of Walsall through Parent Participation



**Web: [www.facewalsall.com](http://www.facewalsall.com) Tel: 07856 314596**



facebook.com/facewalsall

## School Nurse Service

# Your School Nurse service offer FREE virtual workshops for Parents/Carers

Are you a Parent/Carer of a child or young person who is struggling with any of the following:

Sleep

Behaviour

Emotions

Toileting *(training and/or common problems)*

Healthy Lifestyles

Fussy Eating

Bedwetting

Scan the QR code for more information



Do you need advice and support about other health issues?  
You can call our Single Point of Access on **01922 423349**.

We have resources to help you:

- Health for Teen Website for teenagers: [www.healthforteens.co.uk](http://www.healthforteens.co.uk)
- Health for Kids Website for children: [www.healthforkids.co.uk](http://www.healthforkids.co.uk)
- School Nursing Service Webpages: [www.walsallhealthcare.nhs.uk/our-services/school-nursing](http://www.walsallhealthcare.nhs.uk/our-services/school-nursing)
- ChatHealth – text messaging service to contact a School Nurse for advice
  - Teen ChatHealth - **07480 635363**
  - Parent ChatHealth - **07520 634909**

## HCP 0-19 Service

# Are you a parent/carer of a child/young person with Special Educational Needs and/or Disabilities?

Our SEND Team are offering weekly drop-in sessions covering the following:



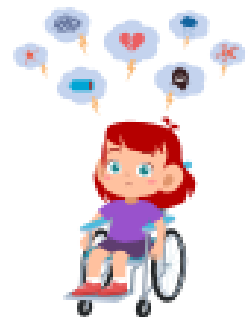
Toileting

### Behaviour



Fussy Eating

### Sleep



Emotions

🕒 9:30am-11:30am

📅 Every Thursday

📍 Child Development Centre, Coalheath Lane, Walsall, WS4 1NG

If you require advice and support from the Health Visiting Service, School Nurse Service or any of our teams, please contact our **Single Point of Access** on **01922 603074** or **send a text explaining your concerns** with your **child's name, date of birth** and **NHS number** to **07520 634909**.



# Should I keep my child off school?



## Yes

### Until...

<b>Chickenpox</b>	at least 5 days from the onset of the rash and until all blisters have crusted over
<b>Diarrhoea and Vomiting</b>	48 hours after their last episode
<b>Cold and Flu-like illness (including COVID-19)</b>	they no longer have a high temperature and feel well enough to attend. Follow the national guidance if they've tested positive for COVID-19.
<b>Impetigo</b>	their sores have crusted and healed, or 48 hours after they started antibiotics
<b>Measles</b>	4 days after the rash first appeared
<b>Mumps</b>	5 days after the swelling started
<b>Scabies</b>	they've had their first treatment
<b>Scarlet Fever</b>	24 hours after they started taking antibiotics
<b>Whooping Cough</b>	48 hours after they started taking antibiotics

## No

but make sure you let their school or nursery know about...

<b>Hand, foot and mouth</b>	<b>Glandular fever</b>
<b>Head lice</b>	<b>Tonsillitis</b>
<b>Threadworms</b>	<b>Slapped cheek</b>



SCAN ME

### Advice and guidance

To find out more, search for health protection in schools or scan the QR code or visit <https://qrc0.de/minfec>.

## Term Dates

### **2024/25 academic year**

Autumn term 2024

Term ends: Friday 20 December 2024

Spring term 2025

Term starts: Monday 6 January 2025

Half term holiday: Monday 17 February 2025 to Friday 21 February 2025

Term ends: Friday 11 April 2025

Summer term 2025

Term starts: Monday 28 April 2025

Half term holiday: Monday 26 May 2025 to Friday 30 May 2025

Term ends: Monday 21 July 2025

### **INSET Days / Non– Pupil Days**

Half term holiday: Monday 26 May 2025 to Friday 30 May 2025

Term ends: Monday 21 July 2025

~~INSET 1– Monday 2 September 2024~~

~~INSET 2– Wednesday 25th September 2024~~

~~INSET 3– Wednesday 29th January 2025~~

**INSET 4– Wednesday 25th June 2025**

INSET 5– Monday 21 July 2025





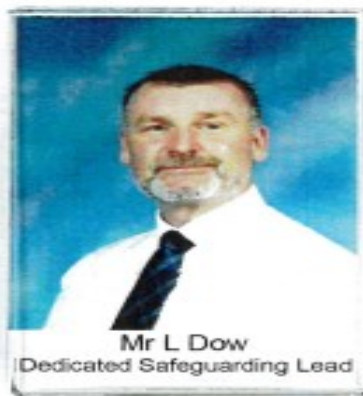
# St Giles' CE Primary School **Safeguarding Team**



Mr Mark Dakin  
Headteacher



Mrs Harsimrat Kaur Mavi  
Deputy Headteacher



Mr L Dow  
Dedicated Safeguarding Lead



Mrs Lindsey Leonowicz  
Safeguarding Manager



Mrs Chemaine Green  
Mental Health +  
Behaviour Support Worker



Cllr. Simran Cheema  
Safeguarding Governor

## Safeguarding at St Giles' CE Primary School

2024/25

If you have any Safeguarding Concerns please contact

Mr Dow on:

07932 708724

[ldow@st-giles.walsall.sch.uk](mailto:ldow@st-giles.walsall.sch.uk)

NSPCC ™

**HELPLINE**

**0808 800 5000**

**help@nspcc.org.uk**

**If you have any concerns about a child, trust your instincts and contact the NSPCC Helpline. Our specialist team will listen, advise and take any action needed.**

An estimated 1 in 20 children have experienced sexual abuse. And child sexual abuse is under-reported by adults. It's time for that to change.

It's never too soon to talk to us. And what you share could make a life-changing difference to a child.

You can contact the NSPCC Helpline by calling 0808 800 5000, emailing [help@NSPCC.org.uk](mailto:help@NSPCC.org.uk) or completing our report abuse online form.

Due to an increase in demand across our service, our voice Helpline is currently available 11am–5pm Monday to Friday. You can still email [help@NSPCC.org.uk](mailto:help@NSPCC.org.uk) or complete our report abuse online form at any time for free. You don't have to say who you are.

**If you think a child is in immediate danger, please call the police on 999 straight away.**