

Walsall SEND Service Newsletter



Walsall Council

SPRING TERM 2025

WELCOME TO THE WALSALL SEND SERVICE SPRING TERM NEWSLETTER

This newsletter is designed for parents and carers of children and young people with Special Educational Needs and Disabilities (SEND). Here, we share important updates, celebrate successes, and highlight opportunities for you to engage with and shape SEND services in Walsall. We are committed to working together to improve support, services, and outcomes for children and young people with SEND. Your voice matters, and we welcome your feedback and involvement.

ARE YOU ON OUR MAILING LIST?



Stay up to date with the latest SEND news, updates, and events in Walsall by joining our mailing list. If you are not already receiving our emails, please contact: localoffer@walsall.gov.uk

CELEBRATING SUCCESS

- Walsall's co-production efforts have been recognised as a key strength by the Department for Education. This means that parents and carers are being actively involved in shaping SEND services and decision-making processes to better meet the needs of families.
- **81.6%** of new Education, Health and Care Plan's (EHCPs) are now completed within 20 weeks, a **21.4% increase** from last year. This improvement ensures that children and young people receive the support they need in a more timely manner.

TIME TO
Celebrate

CELEBRATING SUCCESS CONT.

- To further improve service quality, we have recruited a fully permanent EHC Team, providing greater stability and ensuring more consistent decision-making and support for families.
- The Walsall SENCO Forum, now with **over 100 SENCOs** actively engaged, has strengthened communication between schools and the SEND service, promoting best practices for inclusion and early intervention.
- PINS Project (Partnerships for Inclusion of Neurodiversity in Schools) is strengthening support for neurodiverse students, ensuring better inclusion and early interventions in 40 primary schools across the Black Country.
- The Educational Psychology Service (EPS) has expanded significantly, allowing for better support in schools.
- A new Designated Social Care Officer (DSCO) role has been introduced to better support families navigating social care alongside SEND services.
- The Health Gateway process has improved quality and timeliness (**93%**) of health advice in EHCPs.
- **91.4%** of students in Alternative Provision report better behaviour, and **94.3%** have an improved attitude to learning, ensuring improved educational outcomes.
- We were recently shortlisted for Local Area Partnership Team of the Year, recognising Walsall's commitment to improving SEND services.

AWESOME!



WHAT IS THE WALSALL SEND LOCAL OFFER?

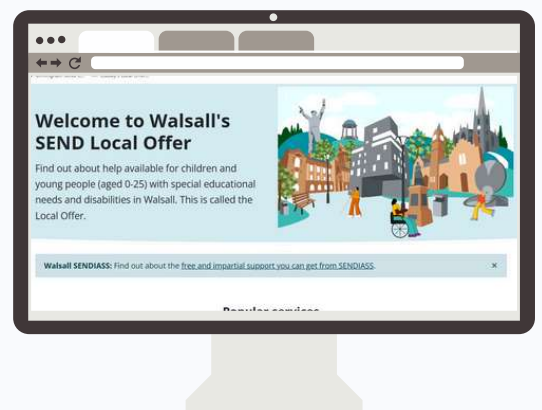
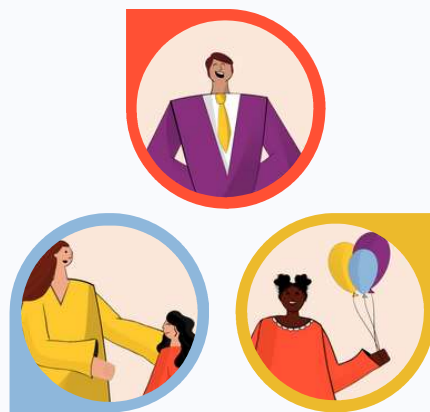
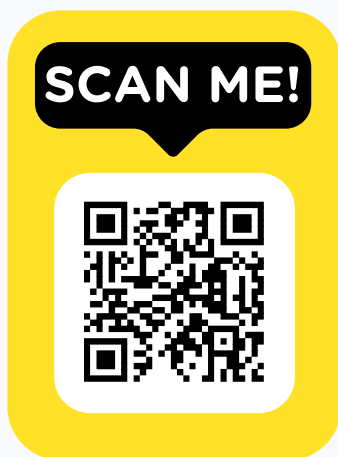
The Walsall SEND Local Offer is an online resource designed to support children and young people aged 0-25 years with Special Educational Needs and Disabilities (SEND), along with their parents, carers, and professionals.

The Local Offer provides clear, accessible information about local services and support, helping families make informed choices about the assistance available to them. It includes information on:

- Education, health, and social care services
- Early years and childcare options
- Support groups and voluntary organisations
- Preparing for adulthood and employment pathways
- Leisure and activity opportunities

The Local Offer is developed in collaboration with parents, carers, and young people, ensuring it reflects the real needs of our community. The Local Offer website has been praised by the Department for Education for being accessible, user-friendly, and free from jargon, making it easier for parents to find the information they need.

Visit the Local Offer website: <https://send.walsall.gov.uk> or scan the QR code below



HAVE YOUR SAY – JOIN THE LOCAL OFFER STEERING GROUP!

We are constantly working to improve the Local Offer, and your feedback is vital in shaping its content and services. The Local Offer Steering Group is a fantastic way for parents and carers to share their experiences and influence how information and services are developed.

If you'd like to be involved, email: localoffer@walsall.gov.uk.



FACE WALSALL is an independent Parent Carer Forum, working alongside parents, carers, and professionals to influence and improve SEND services in Walsall. The forum is not a support group but actively gathers parents' voices and experiences to ensure families' needs are at the heart of local decision-making.

Come and join us to understand how we can work better together, learn about the role of a Parent Carer Forum, and explore how Walsall Parent Carer Forum can work to improve services across the area. This interactive session is a great opportunity to connect with others, share experiences, and find out how you can get involved to make a real difference.

WAYS TO GET INVOLVED:

- Join parent engagement events to share your views.
- Attend SEND information fairs and networking events.
- Take part in consultations and service reviews.

For more info please use this link: [FACE Walsall Facebook Group](#) or alternatively drop them an email on: facewalsall@gmail.com

SHARE YOUR LIVED EXPERIENCE!

We are committed to ensuring that parents, carers, children, and young people are at the heart of how SEND services in Walsall are developed and improved. As part of this, we are expanding our Pupil Tracking Audits to make sure families' voices truly shape decision-making.

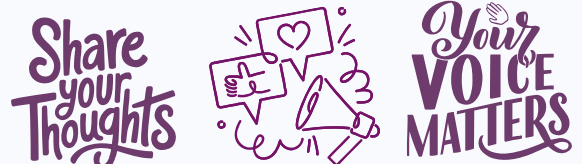
WHAT ARE PUPIL TRACKING AUDITS?

Pupil Tracking Audits allow us to follow a child or young person's journey through their education, health, and care support. By looking at real-life experiences, we can see what is working well and what needs improvement. This helps us ensure that services are meeting needs effectively.

HOW CAN PARENTS AND CARERS GET INVOLVED?

We are inviting parents and carers to take part in this important work by:

- Sharing your child's SEND journey
- Providing feedback on services
- Joining audit review discussions



Your insights will directly influence service improvements, policy changes, and resource allocation in Walsall. Interested in getting involved? Email: localoffer@walsall.gov.uk to find out more!

JOIN OUR YOUTH SEND FORUM!

YOUTH SEND FORUM

We're looking for amazing young people in **Year 4 or above** who have **Special Educational Needs (SEND)** to join our **Youth SEND Forum**.

If you enjoy sharing ideas and want to help improve SEND services, we'd love for you to get involved!



When & Where:

 **Thursday, 10th April**

 **1:00pm**

 **Online – via Microsoft Teams**

What to Expect:

-  **Share** your thoughts, ideas, and experiences.
-  **Help Improve** SEND support and services in Walsall.
-  **Make new friends** with other young people like you!

Ask a teacher to contact me if you'd like to join!

 samantha.house@walsall.gov.uk



Walsall Council

Are you a young person with SEND who wants to have a say in the services and support available in Walsall? We are re-establishing our Youth SEND Forum.

Get in touch with Samantha House, Local Offer & Engagement Lead, at localoffer@walsall.gov.uk to sign up or find out more!

WALSALL SENDIAS DROP INS

SENDIAS are hosting FREE monthly drop-in surgeries for parents, carers and young people. Please come along if you require free and impartial information or advice.

Mon 24th February 1pm-2pm	South & Central Hub WS2 8NG
Thurs 27th March 1pm-2pm	West Locality Hub WS10 8AE
Thurs 10th April 10am - 11am	North Locality Hub WS3 1HJ
Tues 20th May 1pm-2pm	East Locality Hub WS8 6HA

Email:

walsallsendiass@family-action.org.uk


for more information



The **ADHD Foundation Neurodiversity Charity** supports parents and carers so they can understand and meet the needs of their child. With a range of webinars, courses, resources, and our screening service, we help families to know which interventions and adaptations are right for them.

For more info please use this link:

[ADHD](#)




SEN and Disability Information, Advice and Support

Walsall SENDIAS

Workshops

2025





SEN and Disability Information, Advice and Support

Regular updates can also be found on our Facebook page so please do give us a [Like](#)

Parent / Carer Workshops

Please see below our Workshop Sessions that will be running from January to July 2025. If you would like to attend any of these sessions, please book a space via the Eventbrite link. Any questions, please email us at: Walsallsendiass@family-action.org.uk

Date	Time	Session	Venue	Eventbrite Link
Thursday 13 th February	10am-11:30am	Appeals	Manor Farm Community Centre, Rushall, Walsall, WS41EU (Room 3)	
Tuesday 11 th March	10am-11:30am	Parental Lead EHCP request	Manor Farm Community Centre, Rushall, Walsall, WS41EU (Room 3)	
Tuesday 8 th April	11am -12:30pm	SEN Support and School Meetings	Manor Farm Community Centre, Rushall, Walsall, WS41EU (Room 3)	
Thursday 15 th May	12:30pm-2pm	Parental Lead EHCP request	Manor Farm Community Centre, Rushall, Walsall, WS41EU (Room 3)	
Thursday 12 th June	10:30-12pm	Annual Reviews and Phase Transfer Reviews	Manor Farm Community Centre, Rushall, Walsall, WS41EU (Room 3)	
Tuesday 15 th July	10am -11:30am	Parental Lead EHCP request	Manor Farm Community Centre, Rushall, Walsall, WS41EU (Room 3)	



ANNUAL HEALTH CHECKS FOR PEOPLE WITH A LEARNING DISABILITY

An annual health check can help you stay well by talking to a doctor or nurse about your health and finding any problems early, so they can be sorted out. For children and young people 14 years and above with a diagnosed learning disability.

For more info click this link:

[AnnualHealthCheck](#)



Black Country
Integrated Care Board



NHS
Walsall Healthcare
NHS Trust

HCP 0-19 Service

Are you a parent/carer of a child/young person with Special Educational Needs and/or Disabilities?

Our SEND Team are offering weekly drop-in sessions covering the following:



- 🕒 9:30am-11:30am
- 📅 Every Thursday
- 📍 Child Development Centre, Coalheath Lane, Walsall, WS4 1PL

If you require advice and support from the Health Visiting Service, School Nurse Service or any of our teams, please contact our **Single Point of Access** on **01922 603074** or **send a text explaining your concerns** with your child's name, date of birth and NHS number to **07520 634909**.

Neurodiverse Parent Group

Discover Your Unique Community

Supportive Community

Discussions and Awareness

Workshops and Guest speakers

A group for neurodiverse/SEND parents, parents of neurodiverse/SEND children, or pre-diagnosis.

All Welcome.

Free Weekly Support Sessions
Walsall and Darlaston

Email: love@mettaminds.co.uk
www.mettaminds.co.uk/blogs

From Monday
23rd September
2024

INCLUSIVE SPORTS PROGRAMME

Youth Sport Trust has introduced the Inclusive Sport Programme. The programme offers a suite of resources for schools/ youth clubs inspired by international disability and Para Sport events.

The resources offered support the delivery of inclusive programmes, providing young people with and without SEND the opportunity to come together.

For more info use this link:

[YouthSportTrust](https://www.youthsporttrust.org/)

DOWN'S SYNDROME ASSOCIATION England Wales Northern Ireland

INCLUSIVE PARTICIPATION SERVICES AND CAMPAIGNING

We are a national organisation, committed to improving quality of life for people who have Down's syndrome.

For more info & support use this link: **[DSA](https://www.dsa.org.uk/)**

YOUTH OPPORTUNITIES



Thrive into Work are offering 1-to-1 job finding support to young people with additional needs including health conditions

For more info use this link: [ThriveIntoWork](#)

Sibs

For brothers and sisters of disabled children and adults

Sibs is a UK charity that exists to support people who grow up with or have grown up with a disabled brother or sister.

For more information on how they could support your family use this link: [Sibs](#)



Empowering lives through disability sport and inclusive physical activity

At Every Body Moves, we believe in the transformative power of disability sport and physical activity. Whether you're seeking local activities or resources, we are here to support you. For more info use this link:

[EveryBodyMoves](#)

Calibre Audio are offering **FREE**

Audiobooks for young people under 25 with additional needs - scan the QR code for more info



Calibre audio

Walsall Council have launched the **POP SEND** (Special Educational Needs and Disabilities) Group. If you are or know any young people please get in touch.

To sign up, please scan the QR code



P.O.P Youth Activities Timetable

Monday	Tuesday	Wednesday	Thursday	Friday	Saturday
POP Health & Wellbeing Hub 3-5.30pm 16-25 yrs @popwalsall	POP Youth 3.30-5.30pm 12-16 yrs @popyouth	POP Health & Wellbeing Hub 3-5.30pm 16-25 yrs @popwalsall	POP Youth 3.30-5.30pm 7-11 yrs @popyouth	Mobile Youth Bus 2.30-4.30pm The Youth bus will visit various park locations. See Facebook for location.	
POP Youth 6.00-8.00pm 7-11 yrs @popyouth		POP Youth 6.00-8.00pm 12-16 yrs @popyouth			



Palace Play Shop Eat, Blakenall Row, Bloxwich, Walsall WS3 1LW

P.O.P

POSITIVE OUTCOMES PROJECT

SEND



Sign up today for the (SEND) Special Educational Needs and Disabilities group. Age 16-25.

Stan Ball Centre
Abbotts St, Bloxwich,
Walsall WS3 3AZ

Tuesdays
2:30pm - 4:00pm



popwalsall.co.uk



Walsall Council



BLOXWICH COMMUNITY PARTNERSHIP

YOUTH OPPORTUNITIES



Funky Kids is a local based Charity Group serving the needs of families whom are affected by deafness or have hearing impairments In the Midlands and surrounding areas.

Their aim is to provide social and recreational activities for these families.

For more information use this link:

[**FunkyKids**](#)

Tuesday - football sessions - 5.30pm - 6.30pm
Wednesday - Dance class - 5pm-6.30pm
Gym Session - 5pm - 6.30pm
Darts Night - 5pm - 6.30pm
Tots group / Coffee Morning - Wednesdays & Fridays - 9am-12noon
Teens group - 3rd Saturday of every month - 12noon - 3pm

check our facebook out for details on all events

Our clothing/ food drive is still open! All donations welcome.

Contact information:
Manager - Simone Carter
Email - Funkykidswalsall@gmail.com
Tel - 07912880373



SHORT BREAKS provide opportunities for children and young people with a disability to spend time away from their families, relax, develop new friendships, take part in new experiences, and have fun doing positive activities. They also give families a break from their caring responsibilities, a chance to rest or spend time with their other children.



The Universal offer can include activities like leisure and sports services, youth and play services, voluntary and community facilities and sports and games clubs

The Targeted offer - School Holiday activities, to access this, children and young people should:

- be aged from 8 to 17 years old (up to their 18th birthday)
- live in Walsall
- have a diagnosed disability and
- be in receipt of disability living allowance (DLA)
- An up-to-date short breaks passport (reviewed and updated within the last 12 months) is required to access the service, to ensure we have the right information for the planning of activities and support for our children and young people

The Short Break booklet and expression of interest online form for the activity schemes for every holiday (excluding Christmas) is available six weeks before each school holiday. For information on how to sign up please email: shortbreaks@walsall.gov.uk

YOUTH OPPORTUNITIES

HAF PROGRAMME

EASTER PORTAL GOES LIVE: TUESDAY 11TH MARCH

Easter Offer: You can pick up-to 4 activities over the period 14th - 25th April 2025

We have a range of activities that may include: Bowling, Cinema, Easter Sensory Day, Swimming & Adventurous Activities.

To register your child onto the Walsall HAF Programme, you must first have an individual HAF code (one for each child). You only need one code to access all the programmes and you will only need to register once for each child.

If you have not received a letter, you can always contact the HAF team via: wr4c@walsall.gov.uk

If the child is eligible or you are unsure and the HAF team will then create and email the unique code.



Sassy Sensory

Swimming & Sports Sessions

These sessions are carefully tailored for children with special educational needs and disabilities and their families
This is funded by Walsall Council Short Break Services

TAKING PLACE @
Bloxwich Active Living Leisure Centre
High St, Bloxwich, Walsall WS3 2DA

Session will take place 1st Sunday of every month

SASSY SENSORY SURPRISES
EXPLORING SENSORY WITH YOU LEISURE

For more information regarding these sessions or to sign up to the sassy mailing list please get in touch

✉ toni@sassysensorysurprises.co.uk
🌐 www.sassysensorysurprises.co.uk
📱 @sassysensorysurprises

We understand family circumstances can change at short notice and we anticipate these sessions will be in high demand. If you book on and are unable to attend please contact us to allocate the space to another family.

Please book on one session (swimming or sports)

Walsall Leisure Walsall Council

Sassy Sensory Surprises

COMING SOON
WELLBEING WALKS WITH SASSY SENSORY SURPRISES

Looking for something new this year? If traditional support groups aren't your thing, we've got the perfect way to connect with other SEND parents and carers in a positive, uplifting environment—all while improving your fitness, mental health, and wellbeing!

The Sassy Team is excited to announce our Wellbeing Walks, launching soon! Each month, we'll meet in different locations, giving you the chance to explore, connect, and enjoy new experiences.

OPEN TO ALL—WALK, TALK, CONNECT, AND FEEL GOOD!

FOR MORE DETAILS, CONTACT US:
toni@sassysensorysurprises.co.uk

SASSY SENSORY SURPRISES
EXPLORING SENSORY WITH YOU LEISURE

STAY TUNED—WE CAN'T WAIT TO WELCOME YOU!

For more info about how to get involved please use this link: [SassySensory](https://www.sassysensorysurprises.co.uk)

CALLING ALL SENCO'S!

We are looking for more SENCo's to join our SENCo Forum

SENCo's please email to join up to our SENCo forums

inclusion@walsall.gov.uk



If you have any feedback or wish something to be included in the next SEND Communications please do not hesitate to get in touch.

Next Issue: Summer Term 2025

Submit your updates by 29th May 2025 to be included!

Please use the below emails

Sam: samantha.house@walsall.gov.uk

Local Offer: localoffer@walsall.gov.uk

Thank you for being part of the Walsall SEND community!



Walsall Council

