



## School Newsletter

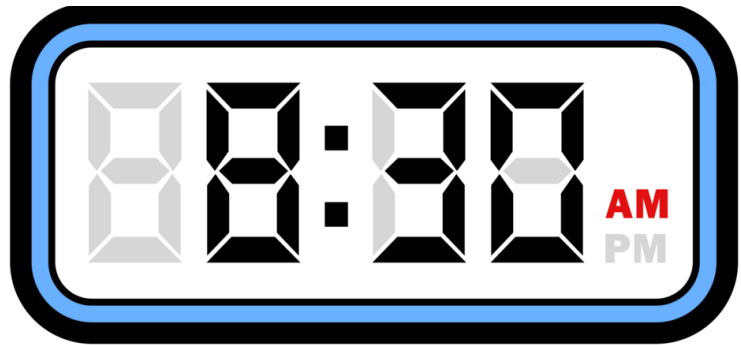
Friday 31st January 2025

*'You must love one another as I have loved you.'* John 13 v 34.

Working together with love we will provide a happy and nurturing environment where all will, **'learn to love and love to learn'**, making outstanding progress through an enriched and creative curriculum. Through our strong Christian ethos we will celebrate and embrace the richness of our community.

**Learn to Love - Love to Learn**

*'You must love one another as I have loved you.'* John 13 v 34



### Punctuality

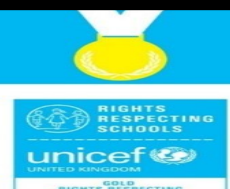
Please make every effort to arrive for 8.30am each morning. Gates close at 8.45am.

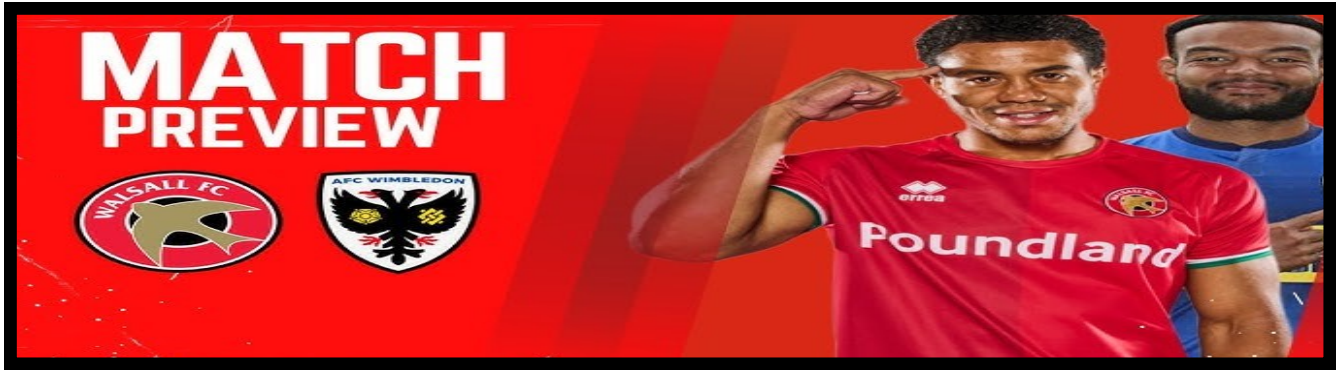
Children arriving after 8.45am are **LATE** and will need to be signed into school electronically at the School Office by parent.

Please support the school by being on time everyday.

**WE ARE A UNICEF GOLD RIGHTS RESPECTING SCHOOL**

Children's rights are learned, understood and lived in this school.





## **School Partners League 2 Match**

### **Walsall FC v AFC Wimbledon**

If you would like the opportunity to purchase heavily discounted tickets for the above game, please complete and return the booking form which can be collected from the School Office.

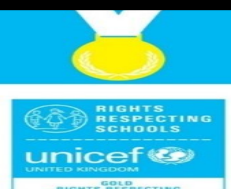
**Walsall FC are offering all pupils and families a Family Ticket for £5 (1 adult + 1 junior) A maximum of 6 tickets for £15 will apply and they must be used by 50% children and 50% adult.**

Please return the booking form to the School Office with payment by Friday 28th February.

**(Cheques payable to Walsall FC Ltd)**

**WE ARE A UNICEF GOLD RIGHTS RESPECTING SCHOOL**

**Children's rights are learned, understood and lived in this school.**





**WaterAid**



Water Aid

**Friday 7th February 9.00am**

**4S and 4G Water Aid Presentation In Church**

**Parents and Carers Welcome**



**Clean water.  
Decent toilets.  
Good hygiene.**

**What can  
you do to  
help?**





**Friday 14th February**  
**NSPCC Number Day 2025**

We'll be joining thousands of schools and nurseries taking part in our fun-filled day of maths on **Friday 14th February.**

This year, Claire Rose ( NSPCC Lead) and Buddy will be visiting classes to raise the profile of the work the NSPCC does to support vulnerable children across the country.

**Children are invited to attend school in number themed non-uniform, in exchange for a voluntary donation in support of the NSPCC.**



## School Nurse Service

# Your School Nurse service offer FREE virtual workshops for Parents/Carers

Are you a Parent/Carer of a child or young person who is struggling with any of the following:

Sleep

Behaviour

Emotions

Toileting *(training and/or common problems)*

Healthy Lifestyles

Fussy Eating

Bedwetting

Scan the QR code for more information



Do you need advice and support about other health issues?  
You can call our Single Point of Access on **01922 423349**.

We have resources to help you:

- Health for Teen Website for teenagers: [www.healthforteens.co.uk](http://www.healthforteens.co.uk)
- Health for Kids Website for children: [www.healthforkids.co.uk](http://www.healthforkids.co.uk)
- School Nursing Service Webpages: [www.walsallhealthcare.nhs.uk/our-services/school-nursing](http://www.walsallhealthcare.nhs.uk/our-services/school-nursing)
- ChatHealth – text messaging service to contact a School Nurse for advice
  - Teen ChatHealth - **07480 635363**
  - Parent ChatHealth - **07520 634909**

## HCP 0-19 Service

# Are you a parent/carer of a child/young person with Special Educational Needs and/or Disabilities?

Our SEND Team are offering weekly drop-in sessions covering the following:



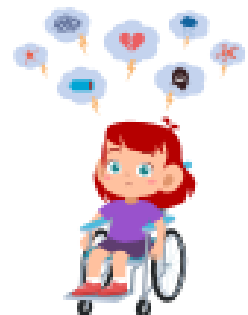
Toileting

### Behaviour



Fussy Eating

### Sleep



Emotions

🕒 9:30am-11:30am

📅 Every Thursday

📍 Child Development Centre, Coalheath Lane, Walsall, WS4 1NG

If you require advice and support from the Health Visiting Service, School Nurse Service or any of our teams, please contact our **Single Point of Access** on **01922 603074** or **send a text explaining your concerns** with your **child's name, date of birth** and **NHS number** to **07520 634909**.



# Should I keep my child off school?

## Yes

### Until...

Chickenpox	at least 5 days from the onset of the rash and until all blisters have crusted over
Diarrhoea and Vomiting	48 hours after their last episode
Cold and Flu-like illness (including COVID-19)	they no longer have a high temperature and feel well enough to attend. Follow the national guidance if they've tested positive for COVID-19.
Impetigo	their sores have crusted and healed, or 48 hours after they started antibiotics
Measles	4 days after the rash first appeared
Mumps	5 days after the swelling started
Scabies	they've had their first treatment
Scarlet Fever	24 hours after they started taking antibiotics
Whooping Cough	48 hours after they started taking antibiotics

## No

but make sure you let their school or nursery know about...

Hand, foot and mouth	Glandular fever
Head lice	Tonsillitis
Threadworms	Slapped cheek



SCAN ME

### Advice and guidance

To find out more, search for health protection in schools or scan the QR code or visit <https://qrc0.de/minfec>.

## Term Dates

### **2024/25 academic year**

Autumn term 2024

Term ends: Friday 20 December 2024

Spring term 2025

Term starts: Monday 6 January 2025

Half term holiday: Monday 17 February 2025 to Friday 21 February 2025

Term ends: Friday 11 April 2025

Summer term 2025

Term starts: Monday 28 April 2025

Half term holiday: Monday 26 May 2025 to Friday 30 May 2025

Term ends: Monday 21 July 2025

### **INSET Days / Non– Pupil Days**

Half term holiday: Monday 26 May 2025 to Friday 30 May 2025

Term ends: Monday 21 July 2025

~~INSET 1– Monday 2 September 2024~~

~~INSET 2– Wednesday 25th September 2024~~

~~INSET 3– Wednesday 29th January 2025~~

**INSET 4– Wednesday 25th June 2025**

INSET 5– Monday 21 July 2025





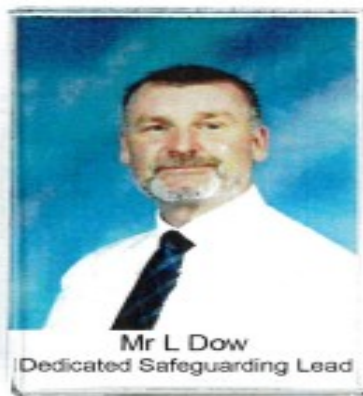
# St Giles' CE Primary School **Safeguarding Team**



Mr Mark Dakin  
Headteacher



Mrs Harsimrat Kaur Mavi  
Deputy Headteacher



Mr L Dow  
Dedicated Safeguarding Lead



Mrs Lindsey Leonowicz  
Safeguarding Manager



Mrs Chemaine Green  
Mental Health +  
Behaviour Support Worker



Cllr. Simran Cheema  
Safeguarding Governor

## Safeguarding at St Giles' CE Primary School

2024/25

If you have any Safeguarding Concerns please contact

Mr Dow on:

07932 708724

[ldow@st-giles.walsall.sch.uk](mailto:ldow@st-giles.walsall.sch.uk)

NSPCC ™

**HELPLINE**

**0808 800 5000**

**help@nspcc.org.uk**

**If you have any concerns about a child, trust your instincts and contact the NSPCC Helpline. Our specialist team will listen, advise and take any action needed.**

An estimated 1 in 20 children have experienced sexual abuse. And child sexual abuse is under-reported by adults. It's time for that to change.

It's never too soon to talk to us. And what you share could make a life-changing difference to a child.

You can contact the NSPCC Helpline by calling 0808 800 5000, emailing [help@NSPCC.org.uk](mailto:help@NSPCC.org.uk) or completing our report abuse online form.

Due to an increase in demand across our service, our voice Helpline is currently available 11am–5pm Monday to Friday. You can still email [help@NSPCC.org.uk](mailto:help@NSPCC.org.uk) or complete our report abuse online form at any time for free. You don't have to say who you are.

**If you think a child is in immediate danger, please call the police on 999 straight away.**