

St. Giles' C.E. Primary School



Welcome Pack- for Nursery Parents

Welcome to St. Giles' Church of England Primary School

St Giles is a special place where the staff are dedicated to providing a stimulating, exciting environment where everyone feels valued and safe, ideas can flourish and pupils can realise their full potential.

By providing a well-structured and engaging curriculum, and by promoting good behaviour through our Christian ethos, we aim to enthuse in all children a love of learning as well as respect and care for each other.

We aim to ensure your child thrives at St Giles C.E. Primary, feeling safe, having fun and enjoying success. We want our pupils' time in school to be memorable, build on what they know and can do as well as help them become lifelong learners. We highly value the partnership between home, school and church and encourage all parents to take an active part in the education of their children. The school cannot work in isolation.

We look forward to welcoming you and your child to our school.

Mr M Dakin

Headteacher



September 2022

Transition

Initial visit

Each child will attend nursery for 1 hour from

Tuesday 6th September until Friday 9th September.

If you have been allocated morning nursery your time slot will be either;

9.30am - 10.30 a.m.

Or 10.40am - 11.40am

If you have been allocated afternoon nursery your time slot will be either;

1.00- 2.00 p.m.

or

2.15pm - 3.15pm

3 Hour Session

Your child will start their 3 hour session on **Monday 12th September** where they will attend their allocated morning or afternoon each day.

Morning sessions will run from 8.45- 11.45a.m - gates are open from 8.30am and from 11.40am for collection .

Afternoon sessions will run from 12.15pm- 3.15p.m. - gates are open from 12:10p.m and from 3:15 p.m. for collection .

Children will need:

- A change of clothes in a carrier bag in case of accidents (socks, pants, trousers/skirt). We recommend a school backpack or PE bag for the storage of these.

- PE kit (black shorts, white t-shirt and black pumps)

- School book bag

Please label all items of clothing with your child's full name.

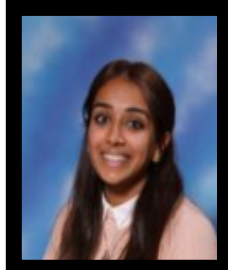
Nursery Staff



Ms Zollino



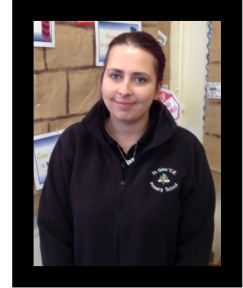
Mrs Capewell



Mrs Aujla



Mrs Bennett



Miss Rani

Session Times

Morning Nursery: 8.45 a.m. –11.45 a.m.

Afternoon Nursery: 12.15 p.m. - 3.15p.m.

Nursery

School gates are opened at **8.30am** for staff to accompany your child to the Nursery from the school gate. If the gates have been closed, please bring your child through the main school office entrance.

COLLECTION

Nursery (AM)

School gates are opened at **11.40am** - Children are to be collected from the school gates.

Nursery (PM)

School gates are opened at **3.15pm** - Children are to be collected from the playground.

If you have any questions please speak to the Nursery staff. If you would like a longer conversation with your child's class teacher please make an appointment at the school office. This ensures the teaching of your child is not compromised and quality time can be given to answer your questions fully.

School Contact Information



St Giles' C.E. Primary School
Walsall Street
Willenhall
West Midlands
WVI3 2ER

Headteacher: Mr M Dakin

Tel: 01902 368308

Email: postbox@st-giles.walsall.sch.uk

School Website: www.st-giles.walsall.sch.uk

School Uniform

This is our school uniform:



Girls:	Boys:
School sweatshirt with logo or a plain red jumper/cardigan	School sweatshirt with logo or a plain red jumper
White blouse or polo shirt	White shirt or polo shirt
Grey or black skirt/tights/trousers or Red/white checked dress for the summer	Grey or black trousers (jogging bottoms for can be worn in the Autumn term)
P. E Kit	
Plain white t-shirt	
Black PE shorts or jogging bottoms in colder weather	
Black PE pumps	
PE bags are available to purchase at the school office.	

Please label all items of clothing with your child's full name.

Routines

Snack Time

Each day your child will have a carton of milk and a piece of fruit. Please provide your child with a bottle of water which can be accessed throughout the day. Please ensure your child's bottle is named.



Toilets

We hope that your child will be toilet trained before starting Nursery. For the autumn term children may wear black or grey jogging bottoms to assist with this. Children are allowed to go to the toilet whenever they need. If your child is still in the process of being toilet trained please ensure nappies and wipes are provided daily. Please ensure your child arrives at Nursery with a clean nappy and not heavily soiled.



Absences



If your child is absent from school, please ensure you contact the school office by **no later than 9:00am** to confirm the reason.

This will need to be done for **each day** they are absent.

You can leave a message on the school absence line by dialling 01902 368308 and then press 1.

Please note: If your child is absent for more than 3 days, you will need to provide medical evidence in the form of an appointment card, medication label or Pharmacy First Card etc.



What if I need someone else to collect my child(ren)

If your child needs to be collected by someone else, you need to contact the school office by no later than 2:30pm. We will need you to provide the name of the person collecting and this person will need to sign a form upon collection of the child(ren).

Alternatively if this will be an on-going arrangement, please provide written consent stating the child's name, days that this person will be collecting and any other relevant information. Alternatively please come into the school office and sign a Consent Form.

Lunch Time

We are committed to providing healthy, well balanced and varied meals and actively encourage children to try new things. Nursery children who stay for the whole day can choose to have a hot meal **priced at £2.10 per day**. You need to put the correct money into an envelope stating: child's name, class, date (s) required. This envelope should be posted into the black box in the entrance to the main school office. Alternatively, your child can bring along a packed lunch and a drink in a named lunchbox. Copies of the school menu can be collected from the school office as required.



Snack Time

Each day your child will have a carton of milk and a piece of fruit. Your child can bring in a labelled water bottle to drink at snack time and throughout the day.

Welcome to Early Years



Starting Nursery can be challenging for both children and parents, for some this may be the first time of separation. There will be lots of new things to learn and of course you will want to ensure that your child is well prepared for this important event. We aim to make it a happy and memorable experience and ensure that children have a smooth transition into their new environment so they can begin to form relationships with new adults and children.

We hope this booklet will provide some useful information that will help your child settle quickly into school.

'Learning Together, Growing Together'



Early Years aims to;

- Provide a safe, secure and caring environment where your child feels valued.
- Encourage your child to build relationships with other children and adults.
- Provide opportunities for your child to be confident to develop as an individual.
- Provide a secure foundation for your child preparing them for their future school years and life.

Curriculum

We follow the Early Years Foundation Stage Curriculum which covers **3 prime areas of learning**



Communication and Language

Children learn to listen to and communicate with each other and with adults.

Personal, social and emotional development

Children are encouraged to develop personal independence, become aware of themselves and the needs of others, and show respect for people of other races and cultures.



Physical development

Children are encouraged to develop physical control and coordination through PE and games. Hand control is developed through using pencils and scissors. Children are also encouraged to develop a positive attitude towards a healthy life.



And 4 specific areas of learning

Mathematics

Children are introduced to mathematical language and ideas including sorting, matching, counting, addition and subtraction.

Literacy

Children are encouraged to share books. Writing and reading skills are developed and practised.

Expressive Arts and Design

Children are encouraged to develop their imagination through participation in art, music and drama.

Understanding of the World

Children are encouraged to develop an awareness of themselves, others and the world around them.

In accordance with the Early Years Foundation Stage Curriculum children learn through play with a mixture of adult led and child choice activities to develop all areas of the curriculum.

During the year we also plan and develop activities linked to the interests of the children in the class. This helps to inspire and encourages the children to learn as we develop their own interests and ideas.

Further information can be found at - <https://www.eyalliance.org.uk/changes-eyfs-2021>



Early Years Offer

Intent

At St Giles we offer a curriculum rich in wonder and memorable experiences. We work hard to provide a stimulating environment that provides exciting opportunities, promotes challenge, exploration, adventure and a real love of learning.

It is our intent that all children develop physically, verbally, cognitively and emotionally in an environment which values all cultures, communities and people. We aim for our children to be confident and independent, to believe in themselves and interact positively with others.

We understand that play is an integral part of learning and this is at the heart of our Early Years curriculum. We believe that a blend of adult directed and uninterrupted child-initiated play ensures the best outcomes for pupils. Warm and positive relationships between staff and children, consistent routines and strong relationships with parents are key.

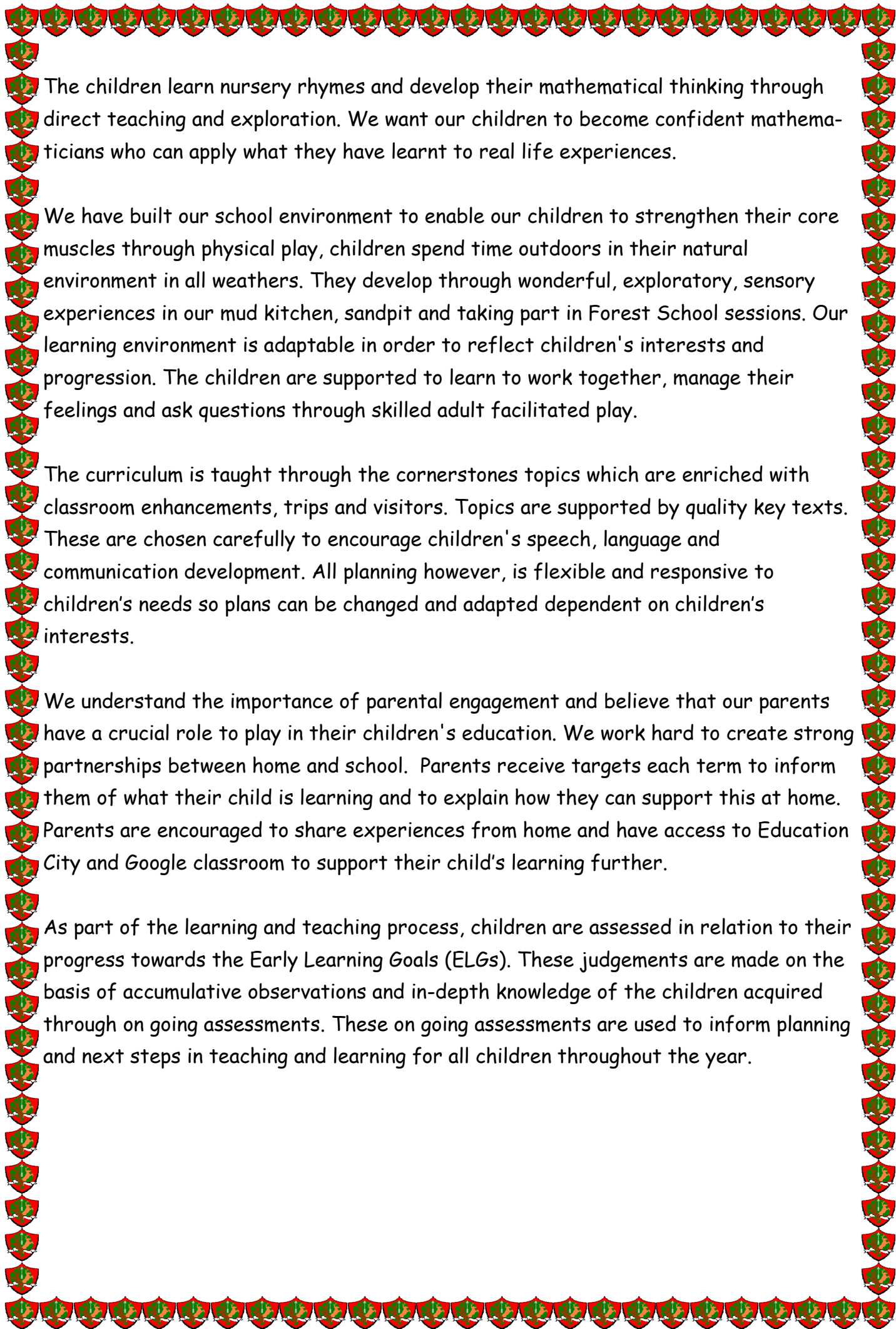
We recognise the crucial role that Early Years education has to play in providing firm foundations upon which the rest of a child's education is successfully based.

Implementation:

At St Giles we meet the welfare requirements laid down in the Statutory Framework for the Early Years Foundation Stage and actively safeguard and promote the welfare of all of our children.

We prioritise creating a 'language rich' environment through the use of songs, nursery rhymes, stories and providing time for quality interactions between adults and between peers. Trained staff ensure that interactions are positive and progressive, allowing children to flourish and gather words at pace in order to become confident communicators.

Children are encouraged to become early readers through enjoyment of books and the systematic teaching of phonics through the Read Write Inc. programme.



The children learn nursery rhymes and develop their mathematical thinking through direct teaching and exploration. We want our children to become confident mathematicians who can apply what they have learnt to real life experiences.

We have built our school environment to enable our children to strengthen their core muscles through physical play, children spend time outdoors in their natural environment in all weathers. They develop through wonderful, exploratory, sensory experiences in our mud kitchen, sandpit and taking part in Forest School sessions. Our learning environment is adaptable in order to reflect children's interests and progression. The children are supported to learn to work together, manage their feelings and ask questions through skilled adult facilitated play.

The curriculum is taught through the cornerstones topics which are enriched with classroom enhancements, trips and visitors. Topics are supported by quality key texts. These are chosen carefully to encourage children's speech, language and communication development. All planning however, is flexible and responsive to children's needs so plans can be changed and adapted dependent on children's interests.

We understand the importance of parental engagement and believe that our parents have a crucial role to play in their children's education. We work hard to create strong partnerships between home and school. Parents receive targets each term to inform them of what their child is learning and to explain how they can support this at home. Parents are encouraged to share experiences from home and have access to Education City and Google classroom to support their child's learning further.

As part of the learning and teaching process, children are assessed in relation to their progress towards the Early Learning Goals (ELGs). These judgements are made on the basis of accumulative observations and in-depth knowledge of the children acquired through on going assessments. These on going assessments are used to inform planning and next steps in teaching and learning for all children throughout the year.

Reading

Sharing a story every day will give your child...

- Huge numbers of new and unusual words to learn,
- Ideas of new places and cultures,
- Knowledge of different people and animals,
- Understanding of feelings and emotions
- Strengthen their bond with you,

What your child needs to thrive...

- Hear 2,500 words per hour,
- Learn at least 400 new words a year ...that's just over 1 per day,
- Be able to talk about their feelings and manage their emotions,
- Use words to imagine and create stories,
 - Understand the world around them,
- Make friends and empathise with others.

The children will also have the opportunity to borrow a book from our library to expand their wider reading and encourage reading for pleasure. These can be changed weekly on Thursdays.

Please ensure that you have shared the books each week and commented in your child's reading diary. There are a variety of responses that you could include such as comments on how they have achieved, what they struggled with and their understanding of the story. If you are unsure of what to include make a general comment, such as 'great reading' and sign your name. For any more advice on this please do not hesitate to ask any member of Nursery staff.

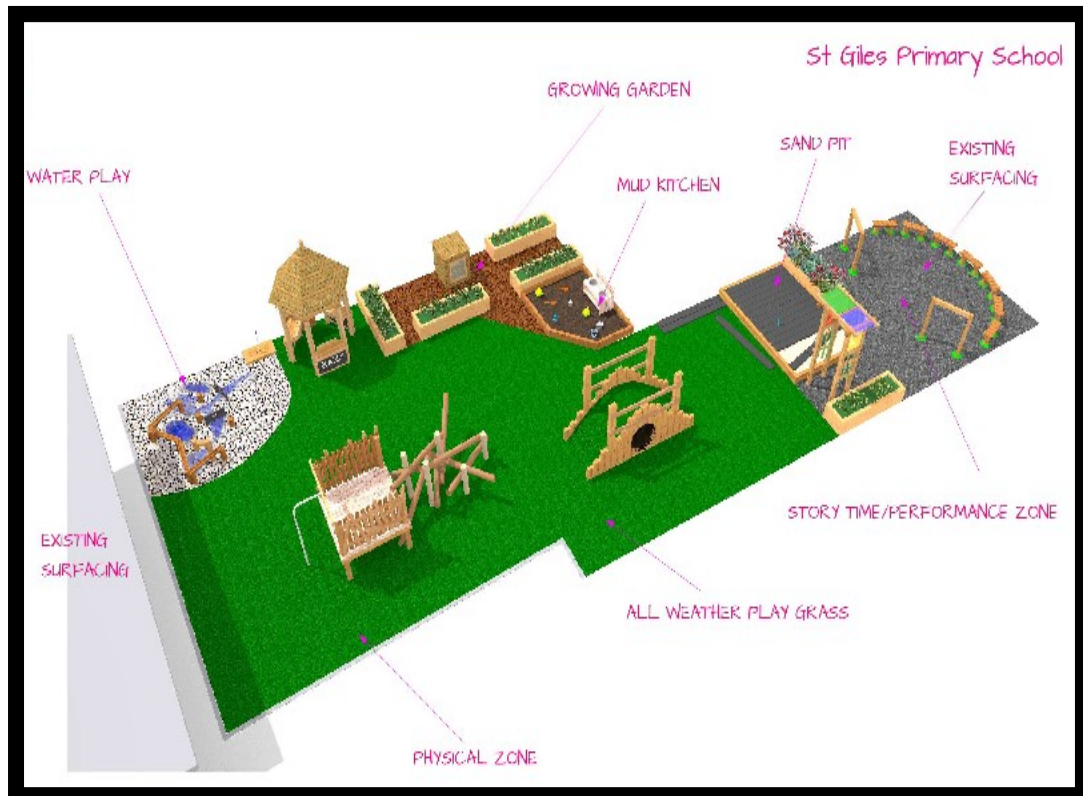
REMEMBER you can read the same story more than once!

Repeated reading opportunities together have a positive impact on a child's gains in vocabulary and comprehension.



The Outdoor Classroom

We love to be outside as much as possible so you will need to remember a few things...



On sunny days your child will need a sun hat (only school logo hats to be worn). Please apply a high factor sun cream before you bring your child to school.



On colder days your child will need to bring a woolly hat (non-designer/branded and of a single colour) scarf and gloves. We will provide all in one waterproofs and wellingtons.

Staying Safe and Happy

When you leave your child in Nursery you need to be fully confident that they will be safe. Please help us by following a few simple rules:

- Jewellery (i.e. earrings, rings, bracelets, necklaces) should not be worn as this can easily get caught on equipment and cause serious injury to a child.
- No smoking on the school premises.
- Parking- You can park in a side street near school or the Wakes Ground car park.
- If you need to collect your child during the school day please inform a member staff in our School Office.



I'm happy because I'm safe

Working Together

All the fun activities that you do with your child at home are important in supporting their learning and development, and have a really long lasting effect on your child's learning as they progress through school. If you make the time every day to do some of the following things with your child it will make a real difference to your child's confidence as a young learner.



Staff can also give you advice about the kind of books or other activities your child might enjoy.

We also send home a termly newsletter so you know what your child will be learning about.

St. Giles' C.E. Primary School



Welcome Pack- for Nursery Children

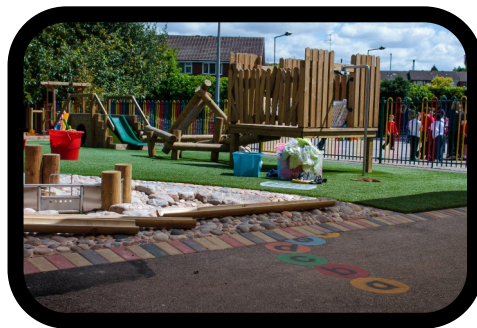
My New School



Hi my name is Fred and you will meet me in Nursery.



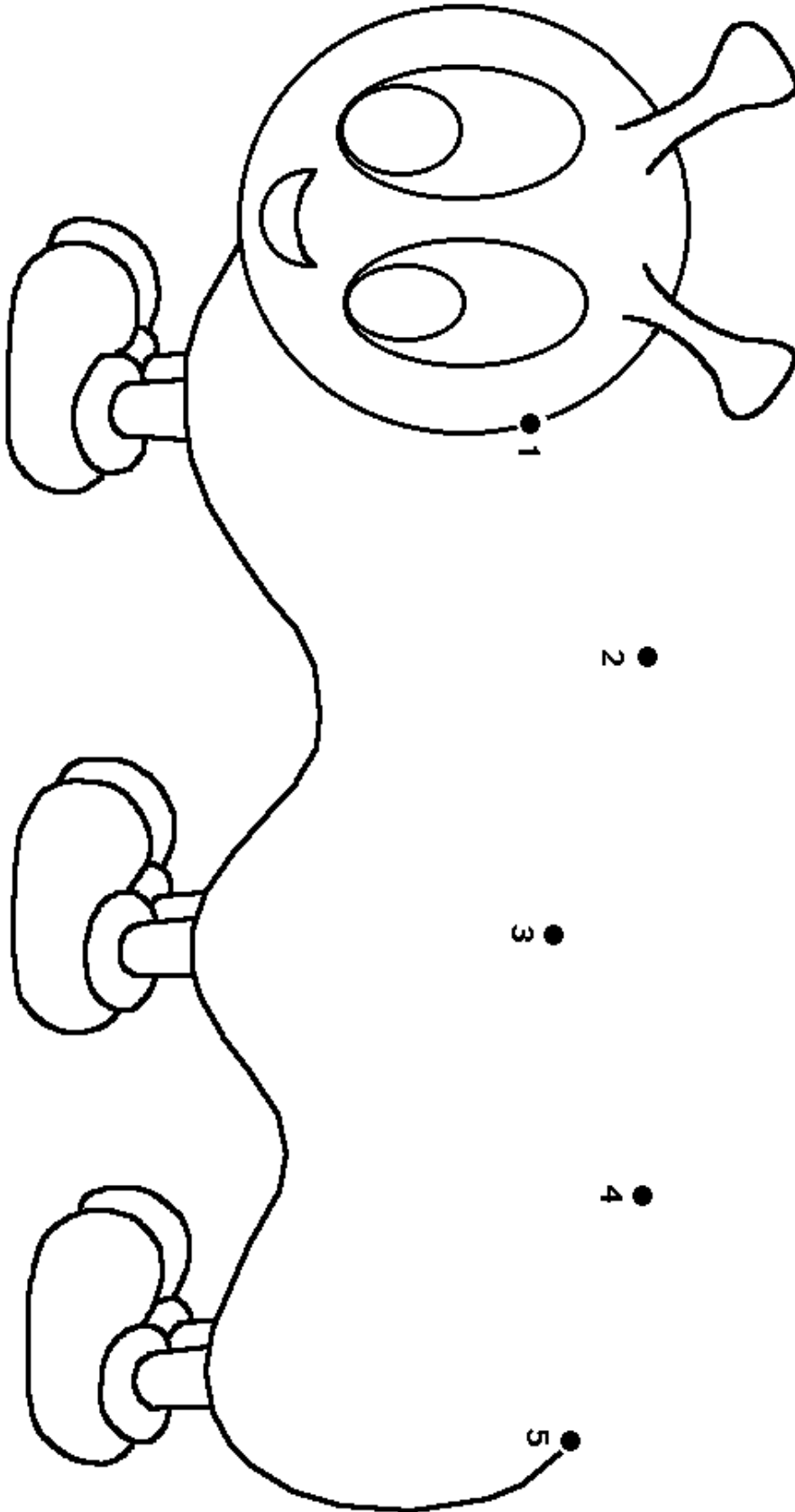
Our outdoor learning area...



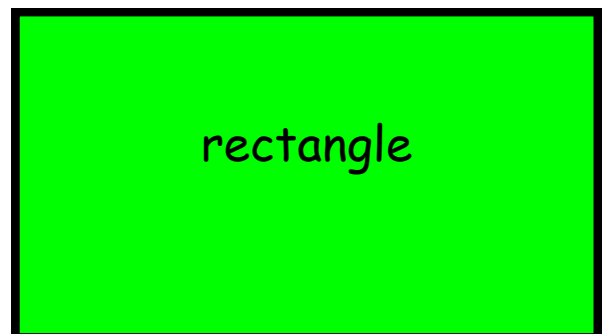
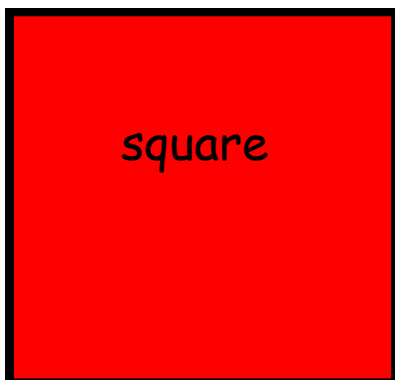
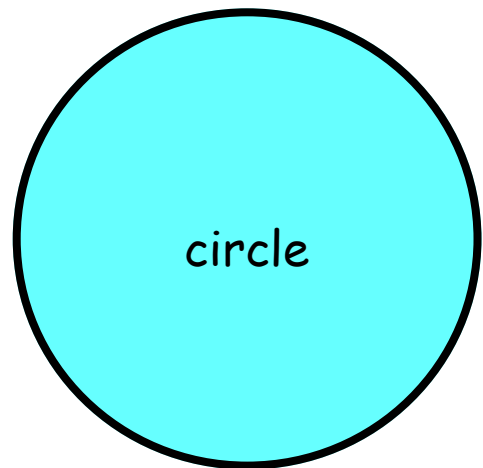
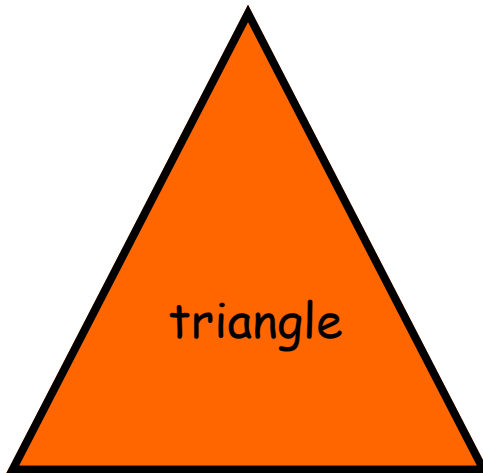
Some indoor learning areas...



Join the dots



Mathematics



Sing and Colour

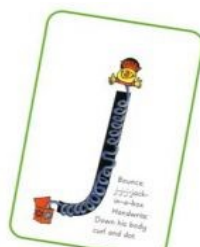
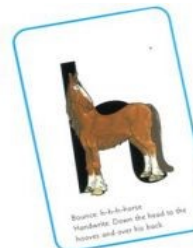
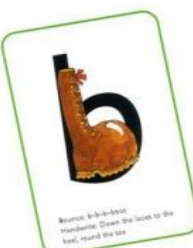
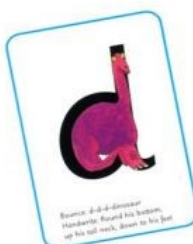
Humpty Dumpty

Humpty Dumpty sat on the wall.
Humpty Dumpty had a great fall.
All the king's horses
and all the king's men
Couldn't put Humpty together again.



© Mystic Arts, LLC

Letter Sounds



m a s d t

i n p g o

c k u b

f e l h s h r

j v y w

th z ch qu x ng nk

Letter Formation

a b c d e f

g h i j k l

m n o p q

r s t u v

w x y z

Cut along the dots

